



Voice of the Dinosaur

Newsletter of the
Kawartha Rock and Fossil Club

January 2014 ~ Volume 26 ~ Issue 1

CLUB ADDRESS:

1211 Kenneth Ave.
Peterborough, ON
K9J 5P8

PRESIDENT

Robert Montgomery
705-432-2039
robertm@bell.net

VICE-PRESIDENT

Steve Wesley
705-743-9175
swesley@i-zoom.net

TREASURER (to Jan. 2014)

Ken Fox
705-742-6440
kfox71@cogeco.ca

SECRETARY

Bev Fox

FIELD TRIP CO-ORDINATOR

Ulrike Kullik
705-778-3787
ulrike.kullik@gmail.com

SHOW CO-ORDINATOR 2014

Bob Beckett
705-748-0178
rbeckett@cogeco.ca

NEWSLETTER EDITOR

Bev Fox
705-742-6440
kfox71@cogeco.ca

PAST PRESIDENT

Mark Stanley

WEB SITE:

www.kawartharockandfossil.com

WEBMASTER: Donald Doell, Jr.

donald.doell@collectorsmatrix.com

Member of the CCFMS

**LAST REGULAR MEETING**

December 10, 2013

The meeting was called to order by the President, Robert Montgomery. A regular business meeting was conducted. After adjournment, members got together to enjoy refreshments and one of Tom Jenkins popular silent auctions, followed by the evening's program.

Karen Fox, MSc, FCGmA, FGA, attractively dressed in a traditional Vietnamese garment called ao dai (see right), presented the evening's program, "Vietnam - A Travelogue for the Rockhound". Karen with the aid of samples and a visual presentation took the members on a tour of highlights from the October International Gemmological Conference (IGC33) in Viet Nam and side trips to the Luc Yen mining district and to the UNESCO World Heritage Site, Halong Bay, where the tour members learned how salt-water pearls are cultured.

**NEXT MEETINGS**

Annual General Meeting

Date: January 14, 2014

Place: Orientation Centre, Peterborough Zoo

Time: 7:00 pm

Agenda:

- A. Call to order.
- B. Reading of 2013 AGM Minutes.
- C. Annual Reports.
- D. Elections for President, Vice- President, Secretary/Treasurer, Show Co-Ordinator and Field Trip Co-Ordinator. As well, selections will be made for Webmaster, Newsletter Editor, Librarian and Archivist.

The AGM will immediately be followed by the
January Regular Meeting.

Agenda: Regular January Meeting

A. Usual Club Business

B. Possible Discussion Topics:

1) Wish List for field trips

If you are interested in club field trips your input is necessary. Please bring to the Jan. meeting a list of your top 10 field trip in Ontario (past or present), this may help to plan club trips that are of interest. Also is there interest in trips longer than one day, or into south western Quebec. In earlier times club members other than our field trip leader, would lead or organize trips, especially if they had a connection to a location, this may be a good way to revitalize these outings.

2) Prospecting Field Trips

Michael Brainbridge supplied a list of potential mineral collecting sites to all clubs in the CCFMS in the hopes that we can assist in identify those which might actually be worth visiting, promoting, and possibly even protecting as field-trip destinations. Here starts the fun; location, accessibility and land status is some of the work yet to be done. Then we have to explore (hopefully find stuff) and share the Info with OHTO (through Michael), and other CCFMS member clubs in the hopes that we can avoid duplication, and expedite the process of identifying new and rewarding destinations for all of our interests. Members are encouraged to email your field trip leader to show your interest in joining in on these 2014 field trips and the planning that is involved with it.

Micheal Bainbridge has requested the assistance of members of all clubs in the area for help in fulfilling the obligations under the mining act, as it relates to the Stickler Mine Claim. This would involve leisurely walks through the bush, mapping mineral occurrences, outcrops and general terrain. If you don't have a GPS you can be paired with someone who does. The hours spent doing this would be logged as work preformed on the claim. Email your field trip leader with your input and/or volunteer.

3) Prospecting advertising

This could be an opportunity to attract new members to our membership. A banner at our March Show might be useful to attract interest. With your help, a budget could be set to accomplish this, or you might suggest other ways to promote this.

4) Mineral and Fossil Trimming Party

We all have specimens needing some work. With the help of member with the necessary equipment this could make for an interesting and useful event. Your input on planning this event will be appreciated.

5) Swap & Talk

Our first annual event was a great success and can continue to get even better with your input and help, join in on the discussion on how we can improve this event.

6) Membership Drive

Would you be willing to volunteer a couple of hours one weekend to promote the club. There are lots of different venues, I'm sure you could add to the list to consider one or two. Your input will be needed on this very important matter. Peterborough Home and Outdoor Show, March 14-16th, 2014, attracting over 8,500

visitors.

The Kawartha Home, Cottage & Country show, April 4-6th, 2014.

Peterborough Garden Show, April 11-13th, 2014, nearly 8000 visitors.

Spring Craft Show Buckhorn, May 17th, 2014.

Lakefield Jazz, Art & Craft Festival, July 5th, 2014.

7) 2014 Gem, Mineral & Fossil Show

A review of the various jobs necessary to make this show a success will take place. Most positions will likely be confirmed before the meeting, your input and help on this show will be welcome.

Various jobs:

1. Placing signs,
2. distributing flyers,
3. assisting with setting up and/or taking down of tables, etc.,
4. volunteering some time at the Club Table,
5. helping out at the Kids' sandbox,
6. setting up the draw slips box and door prizes display case,
7. helping out with the silent auctions. Tom could still use clean clear or opaque milk bags.

If you wish to participate in the Competitions for the Best Collected Fossil and Mineral, each submissions must be accompanied by one of the appropriate entry forms in last months Newsletter, filled in. A member may enter one submission for each of the two competitions.

If you wish to have a display case of items, contact George Thompson:

email: TrueNorthMiner@aol.com Phone: 613-395-5896 as soon as possible.

8) Bring your own ideas on how you want your club to proceed in 2014 or email your ideas to one of your exec's to be added to the list.

Robert Montgomery

ANNUAL GENERAL MEETING (AGM)

This is a very important meeting for the Club as elections will be held for President, Vice-President, Secretary/Treasurer, Show Co-Ordinator and Field Trip Co-Ordinator. As well, selections will be made for Webmaster, Newsletter Editor, Librarian and Archivist.

The members who have been in the Club for many years have taken their turns at serving on the Executive in various capacities. Now it is the turn of the newer members to step forward and offer to serve. The Club will not survive if its members are not willing to serve.

If, as a newer member, you enjoy your membership in the Club, then you can show it by offering to hold one (or more) of the positions.

Let's have a great showing of members at the AGM who are willing and eager to serve.

Thank you.

Bev Fox

THE FOSSIL CORNER

Erratum: Please note, in the December 2013 issue, Page 4, Figure 8 attributed to Peter Lee, is actually a *Pseudogygites* collected by Martin Legemaate from the upper shale layer. Thanks to Peter for bringing this to my attention.

To the right is the *Isotelus sp.* that Peter Lee found. The head is buried in the rock matrix. Thanks to Peter for his excellent photo.



2013 Fossil Collecting - Trip 6 By Kevin Kidd

Sunday, Oct 20

Better late than never, it was once again time for the annual CCFMS trip into the St. Marys cement quarry in Bowmanville. We were asked to meet in the parking lot by 8:30 am, so when I arrived just after 8:00 am and saw the lot almost full, I was a bit shocked (Figure 1). I wonder if I hyped this place a bit too much in my article last year. ☺

We went into the lunchroom for the prerequisite safety talk just before 9:00 am, and once that was over, we were basically turned loose. Most, if not all, of us made a beeline to a large blast pile on Level 2 and the search was on. I quickly scrambled to the top of the pile and began looking, but it didn't take long before I came to the realization that this wasn't nearly as productive as it had been last year. I wasn't finding anything, and even pieces of trilobites were somewhat scarce. I did notice a lot more brachiopods than I'd seen in previous years, but they were all on large rocks and I couldn't be bothered cutting them out. Ulli found the first trilobite, an *Isotelus mafritzae*. The thorax and pygidium were exposed on the surface, and she hoped the head was buried (Figure 2). After I knocked a bit of the excess rock away, she managed to carry it down to her car.

I continued looking, but was still coming up empty, as was pretty much anyone else I spoke to. Once I'd covered basically the entire pile, I decided to head down to Level 3. Along the way, Ulli stopped me again to show me another trilobite she'd found (Figure 3, page 4). That woman seems to have the magic touch this season. She gave me both the trilobites for preparation. Unfortunately, the *Isotelus* was headless. The remainder of the



Figure 1.
The largest crowd I can remember ever at St. Marys.



Figure 2.
Isotelus mafritzae
At nearly 2 inches wide, this would have been a great specimen if complete. Sorry about the blurry pic.

thoracic segments were there, buried, but beyond that, nothing. The second trilobite was a surprise. I just assumed it was a *Ceraurus*, but I should have known better. The one exposed tail spine has a distinct ridge, making it triangular in cross-section. This rules out *Ceraurus* and makes it a *Ceraurinus marginatus* – a closely related but rarer species. They aren't uncommon in the Lindsay/ Cobourg Formation that we were in, although I have yet to find one, but they aren't found in many other places worldwide. Ulli's is likely complete as I've dug out the glabella and right eye so far and there's no reason to think the rest isn't buried as well (Figure 4).



Figure 3.
Ulli's second trilobite as found.



Figure 4.
A work in progress, and I must say, I'm a bit jealous.

There was another large pile to poke around in on Level 3 and this level has given me the most trilobites in past years. I again climbed to the top of the pile and started looking, but again, there wasn't much to be had. There were a few more trilo-bits than on Level 2, but still nothing even close to complete. Eventually, I did find one more or less complete, but still considerably damaged and a pain in the butt to extract (Figure 5). It was at the back of the pile on a vertical rock and I didn't feel like lugging my saw up to get it.



Figure 5.

Someone still up on Level 2 did find something as the familiar sound of a saw filled the quarry (Figure 6). I later learned that it was Peter Lee and he had found himself a trilobite.

By around noon, all I had to show for my efforts was a *Lingula cobourgensis* brachiopod (Figure 7, page 5). WHOPEE!! OK, it's a nice specimen, but considering that last year by this time, I had several trilobites, this year was turning out to be a real bust. As an interesting side note, *Lingula*-type brachiopods still exist and are pretty much unchanged since at least the early Ordovician.



Figure 6.
Every time I heard a saw, I just had to look around for the inevitable dust cloud.



Figure 7.

My largest *Lingula* so far at an inch long.



Figure 8.

On some very fragile shale is my trio. This is as found. The complete one on the edge only has some damage to the eyes and the one buried next to it is complete as well.

I went back to Level 2 and heard rumors that others had found at least partial trilobites, so there was still hope. After more searching of the pile, but again being skunked on Level 2, I went back down to Level 3 to another area I'd heard was more weathered and contained more pieces, but had already been looked over by several people. It took me until 1:30 pm, (we had to be out by 3:00 pm) but in this pile, I finally made my trip worthwhile. Everyone else had missed it, but I got myself a triple *Isotelus* plate (Figure 8, above). Actually, it's only two and a half but triple sounds better. It's pretty delicate and needs some glue work in addition to prepping, but should be quite nice when completed.

Not far from where I found that, I talked to another couple I know, Barb and Derek, and asked how they were doing. Derek showed me his latest find and it was something I'd never seen before. He'd found an enrolled *Pseudogygites latimarginatus* trilobite (Figure 9). I have some prone examples, and have seen hundreds of tails, but this is the first enrolled one I can remember seeing. These are most common at the top of the quarry but can be found in decreasing amounts as you go deeper. That piece also made its way home with me for preparation (Figures 10 and 11, below).



Figure 9.

Plenty of digging ahead to expose this trilobite.



Figure 10.

Figures 10 & 11. After removing over an inch of rock, I was disappointed to see that it was missing the front end of the cephalon. Still, what is there looks nice. This species is related to the common *Isotelus*, but the ribbing on the pygidium (tail) is a dead giveaway for identification.



Figure 11.

Around 2:00 pm, I started cutting all the piece I'd amassed into manageable sized blocks, and since I was going on less than four hours sleep, that effort basically finished me off. Still, I joined the few who remained down on Level 4 for the last half hour or so.

We made our exit at 3:00 pm, but had a bit of a show and tell session at the top of the quarry as we signed out (Figure 12).

Figure 12. At days end, L & R: Roxanne and Randy Ernst (our fearless leader for the day), yours truly and Martin Legemaate, with Malcolm and David in the background.



Figure 12.

My friend Jabali, making his first trip to Bowmanville, had found an *Isotelus*, a small crinoid and either a *Ceraurinus* or *Ceraurinnella* trilobite. Needless to say, he'll be back next year. Martin Legemaate had a nice prone *Pseudogygites* from the upper (Figure 13, below). Malcolm had a piece from a HUGE *Isotelus* (Figure 14, below).



Figure 13.

Pseudogygites sp.

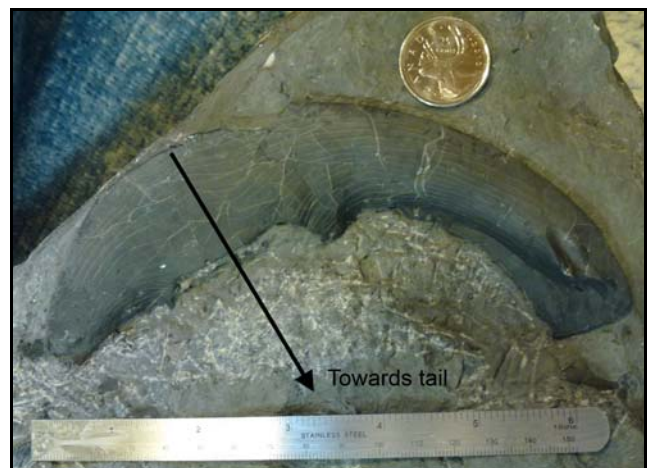


Figure 14.

This piece is called a *cephalic doublure*. It is basically where the exoskeleton wrapped around the underside of the trilobite, in this case, the outer edge of the head (cephalon). I've drawn a line showing the approximate center line of the trilobite, a real beast at over 7 inches wide. A *pygidial doublure* is similar, but comes from the underside of the tail.

David D'Andrea hoped to have the find of the trip. On a slab maybe 14"x 18" were eight *Ceraurus* trilobites. While we could see them with the slab in hand, a photo wouldn't show much of anything. Some were damaged and most looked to have very thin shells, but Malcolm still tried to prep it. Turns out none were much better than 75% complete. As we were talking, one of the quarry workers came over and took some pictures of our finds saying he'd never had the chance to see these things up close. One last thing I forgot to mention about the trip; it was a little on the muddy side (Figure 15). Can't wait until next fall to do it all again.



Figure 15.
My dad always said that a black car would show every spot of dirt!

Until next month – Happy Hunting!

Photo credits: Figures 1, 6 & 10 courtesy of Jabali.
Figure 13 courtesy of Martin Legemaate.
Figure 14 courtesy of Malcolm Thornley.
Figures 2, 3, 4, 5, 7, 8, 9, 11, 12 & 15 by Kevin Kidd.



FEEDBACK REQUEST from DICK FARMERY

Dick has requested feedback from everyone on his November 2013 pegmatite presentation to the Club members. Feedback can be sent to Sue Kehoe, email: suekk1876@yahoo.com, who will pass the info on to Dick.



PASSWORD for WEBSITE ACCESS

A password system has been implemented for access to some pages of the website. There would be little sense in publishing the password here as many people have access to this newsletter so all signed up members for 2014 were informed of the password by email a few days ago. Future membership cards issued this year and next will have the website and password printed on the back of the card.

Ken Fox, Treasurer



THE EDITOR'S CORNER

Happy New Year to you all, and may this be a great year for collecting.

My thanks to Kevin Kidd for the amusing, interesting and informative articles that he has unfailingly provided and to all the other members who have contributed to the Newsletters. Your contributions are much appreciated. The Newsletters would not be as entertaining without interesting articles and items provided by the members.

If you have not renewed your membership for 2014, please do so soon. Otherwise this will be your last Newsletter until you do renew.

Thank you.

2014 Peterborough Gem, Mineral & Fossil Show

Saturday, March 1 and Sunday, March 2

10:00 am to 5:00 pm each day

This will be our club's 21st Annual Show. It is located at the Evinrude Centre, 911 Monaghan Road in Peterborough, and features 25 dealers offering Minerals, Fossils, Rocks, Crystals, Faceted Stones, Gemstone Jewellery, Stone Beads and much more.

We need your help to make this show a success!

Our every popular **Children's Sand Box** will be open both days of the show. We need a very large volume of simple mineral & fossil samples. For those extra specimens that are too good to throw away, but are not good enough to put into your collection, this is a great way to put them into the hands of kids with the hope of sparking an interest in nature. The sand box is a very important part of the show because for many of the kids this is their first exposure to collecting rocks. Please give your donations to Fred Hall before the show or bring them to the show on Saturday morning.

The **Club Table** is located in the Display area. Its purpose is to serve as somewhere people can go to learn about the show and our club. This is our greatest opportunity to tell the public who we are and what we do. We need club members to man this during the show. All you have to do is answer any questions the public may have. If everyone could volunteer for one or two hours each day it would really help. The signup sheet will be at the January & February Club meeting.

Once again we will have a number of draw prizes throughout the show. Club members are not eligible to enter the draw for draw prizes unless they purchase an entry ticket the same as the general public.

Every year we hold our **Competitions** for the **Best Self Collected Minerals & Fossils** by a Club Member. These two separate competitions are limited to specimens that were collected in the previous calendar year i.e. 2013. The specimen must have been collected by the member and you had to have been a member when it was collected. Entries are limited to a single mineral specimen and/or a single fossil specimen per member. Your entries must be placed in the display case on the Club Table in the display area by 10:00 am Saturday morning and picked up at 5:00 pm Sunday afternoon. All members are invited to cast your votes for your favourite entries on Saturday morning. If you have collected something in 2013, then you are eligible to enter your favourite piece from 2013.

We will again be hosting our **Display Cases** for minerals, fossils and lapidary. Displays should be attractive and labelled. These are not competitive displays so everyone should feel free to enter a display. Everyone is encouraged to fill a display case. If you feel that you only want to show one or two specimens, you are welcome too.

Our displays are greatly appreciated and enjoyed by the public and your fellow collectors. From the feedback we have received, the displays have become a major attraction to other collectors who attend our show.

The club has a limited number of display cases available for our members to use. **Please contact George Thompson to reserve a display case.**

There will be **Silent Auctions** each day, auctions with specimens suitable for children, and auctions with higher grade specimens for adults. We always need mineral and fossil samples suitable for both age groups, but especially for the adult auctions. While the auctions for this year's show are already organized and prepared, we still need donations for future years.

Our club's annual **Live Auction** will be held Saturday at 4:00 pm. This is open to everyone who would like to sell rocks, lapidary equipment, books and anything else that is involved in our hobby. Please deliver your items to Tom Jenkins on Friday afternoon or Saturday morning **before 9:30am**. The club charges a small commission to sell your items.

While our **Promotion Campaign** is well underway, we need your help with the placement of our small wire framed signs around the city. The signs will be at the January meeting so PLEASE come to the meeting prepared to take a few of the signs home with you to be posted in your community one week before the show. They are simple, light weight, easy to erect and very effective. We will have a city map at the meeting to make sure we are organized and that all parts of the city are covered. In the past these signs have been one of our more successful methods used to promote the show. If everyone takes a few signs it will make it very easy to cover the entire city and neighbouring communities.

Basically, we need everyone to be involved with our show. If you receive this newsletter, attend meetings or take part in our field trips, you are already benefitting from the success of the show. By taking part and helping with the show, you will be giving something back to the club.

Thanks.

Bob Beckett